

Legend

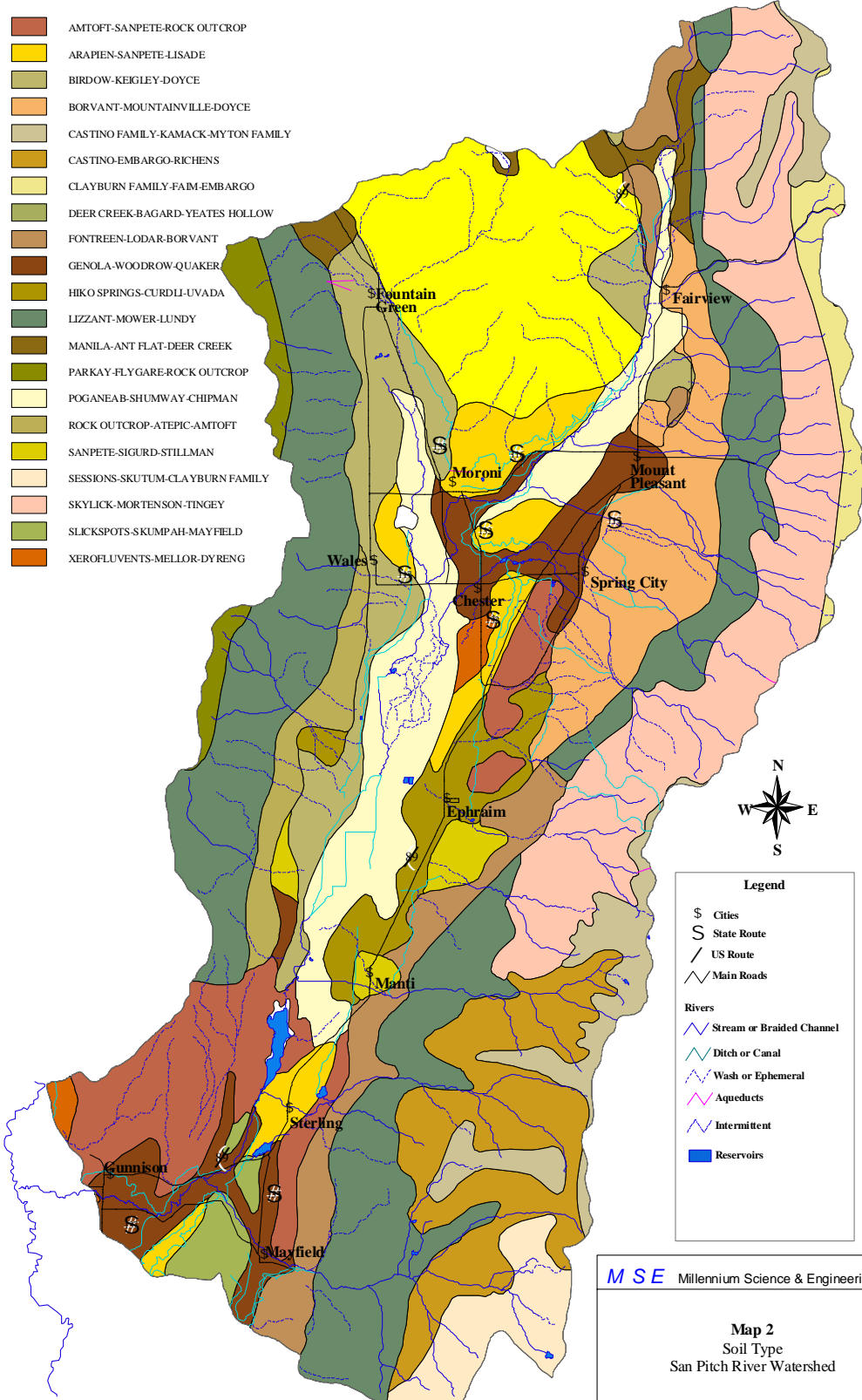
- \$ Cities
- Main Roads
- US Route
- S State Route
- Reservoirs
- Rivers
 - Stream or Braided Channel
 - Ditch or Canal
 - Wash or Ephemeral
 - Aqueducts
 - Intermittent
- Watershed Boundary
HUC# 16030004

MSE Millennium Science & Engineering, Inc.

Map 1
General Overview
San Pitch River Watershed

01/29/03 P#S464

- AMTOFT-SANPETE-ROCK OUTCROP
- ARAPIEN-SANPETE-LISADE
- BIRDOW-KEIGLEY-DOYCE
- BORVANT-MOUNTAINVILLE-DOYCE
- CASTINO FAMILY-KAMACK-MYTON FAMILY
- CASTINO-EMBARGO-RICHENS
- CLAYBURN FAMILY-FAIM-EMBARGO
- DEER CREEK-BAGARD-YEATES HOLLOW
- FONTREEN-LODAR-BORVANT
- GENOLA-WOODROW-QUAKER
- HIKO SPRINGS-CURDLI-UVADA
- LIZZANT-MOWER-LUNDY
- MANILA-ANT FLAT-DEER CREEK
- PARKAY-FLYGARE-ROCK OUTCROP
- POGANEAB-SHUMWAY-CHIPMAN
- ROCK OUTCROP-ATEPIC-AMTOFT
- SANPETE-SIGURD-STILLMAN
- SESSIONS-SKUTUM-CLAYBURN FAMILY
- SKYLICK-MORTENSON-TINGEY
- SLICKSPOTS-SKUMPAH-MAYFIELD
- XEROFLUENTS-MELLOR-DYRENG



Legend

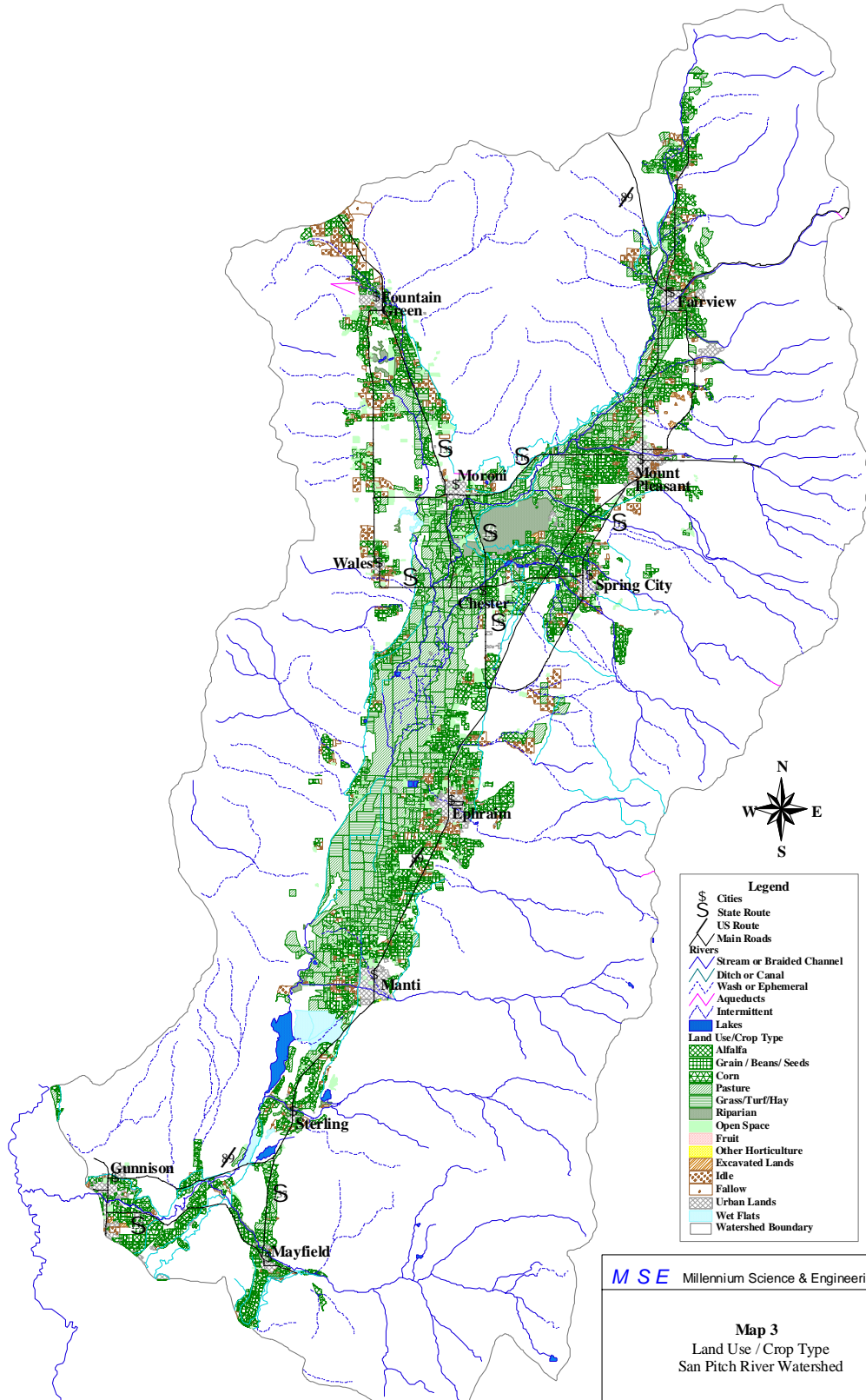
- \$ Cities
- S State Route
- // US Route
- Λ Main Roads
- Rivers**
- Stream or Braided Channel
- Ditch or Canal
- Wash or Ephemeral
- Aqueducts
- Intermittent
- Reservoirs

MSE Millennium Science & Engineering, Inc.

Map 2
Soil Type
San Pitch River Watershed

02/12/03 P#S464





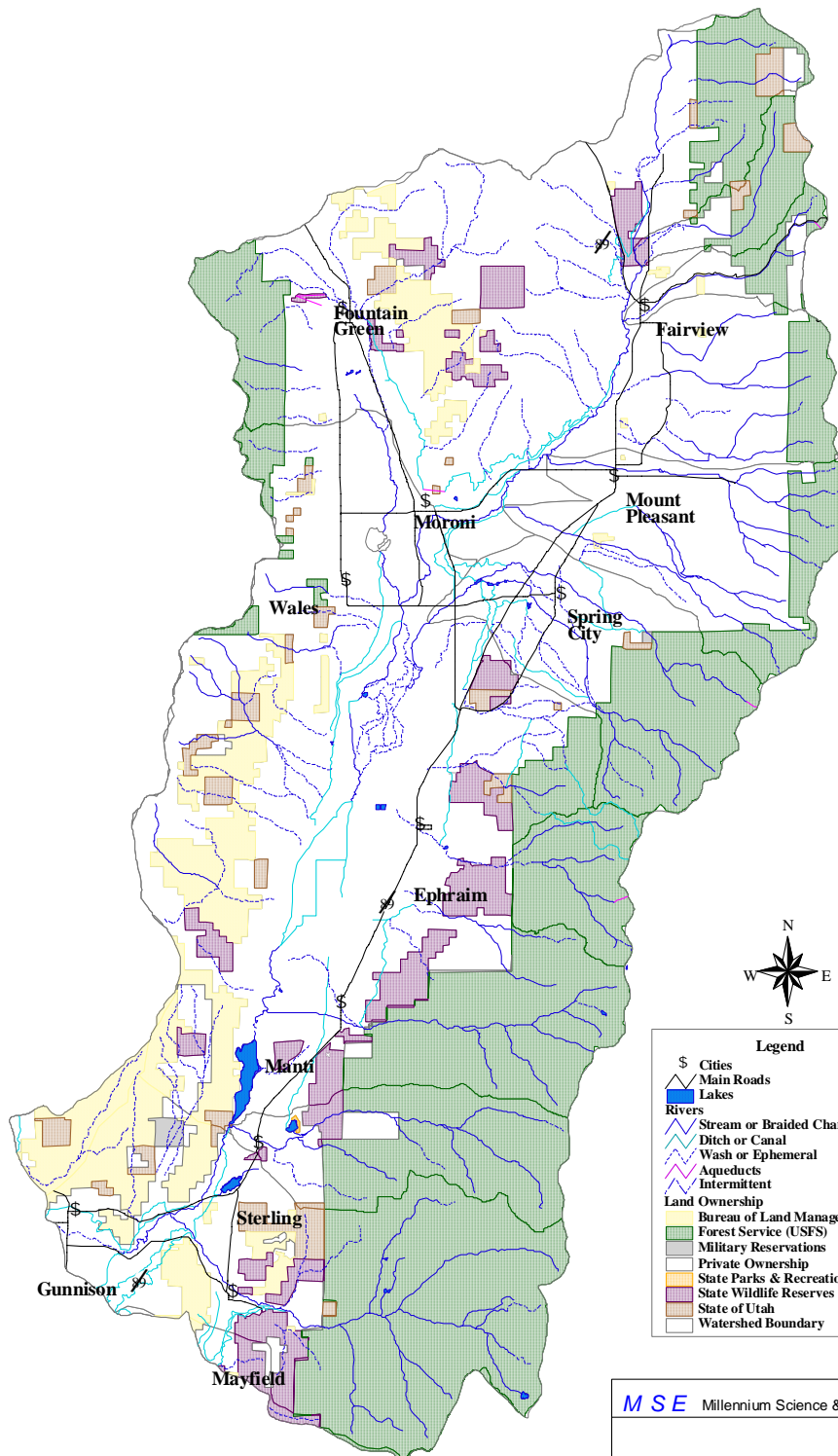
- Legend**
- Cities
 - State Route
 - US Route
 - Main Roads
 - Rivers**
 - Stream or Braided Channel
 - Ditch or Canal
 - Wash or Ephemeral
 - Aqueducts
 - Intermittent
 - Lakes
 - Land Use/Crop Type**
 - Alfalfa
 - Grain / Beans/ Seeds
 - Corn
 - Pasture
 - Grass/Turf/Hay
 - Riparian
 - Open Space
 - Fruit
 - Other Horticulture
 - Excavated Lands
 - Idle
 - Fallow
 - Urban Lands
 - Wet Flats
 - Watershed Boundary

MSE Millennium Science & Engineering, Inc.

Map 3
Land Use / Crop Type
San Pitch River Watershed



01/30/03 P#S464



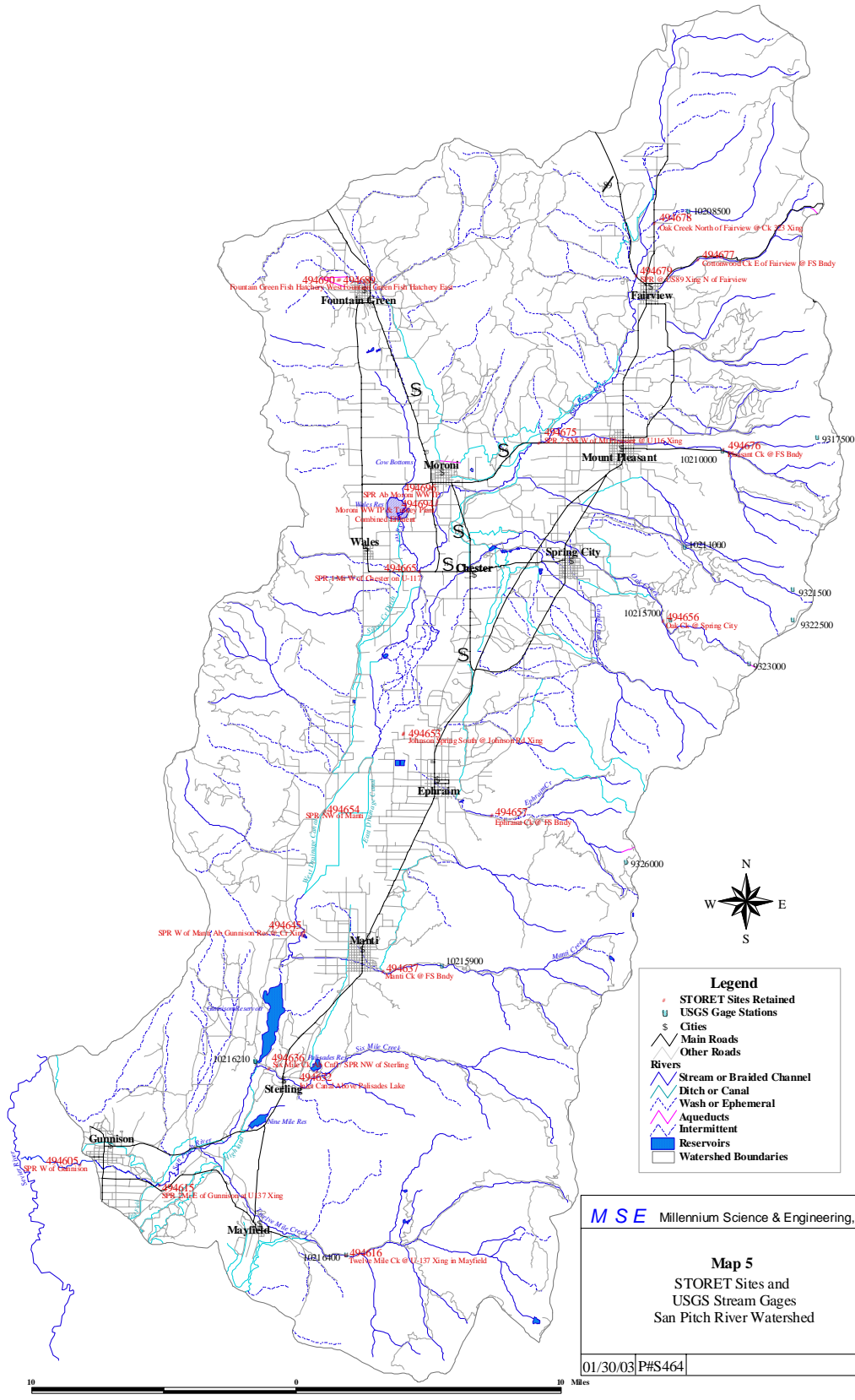
Legend

- \$ Cities
- ▲ Main Roads
- Lakes
- Rivers**
- ▬ Stream or Braided Channel
- ▬ Ditch or Canal
- ▬ Wash or Ephemeral
- ▬ Aqueducts
- ▬ Intermittent
- Land Ownership**
- Bureau of Land Management (BLM)
- Forest Service (USFS)
- Military Reservations
- Private Ownership
- State Parks & Recreation Areas
- State Wildlife Reserves
- State of Utah
- Watershed Boundary

MSE Millennium Science & Engineering, Inc.

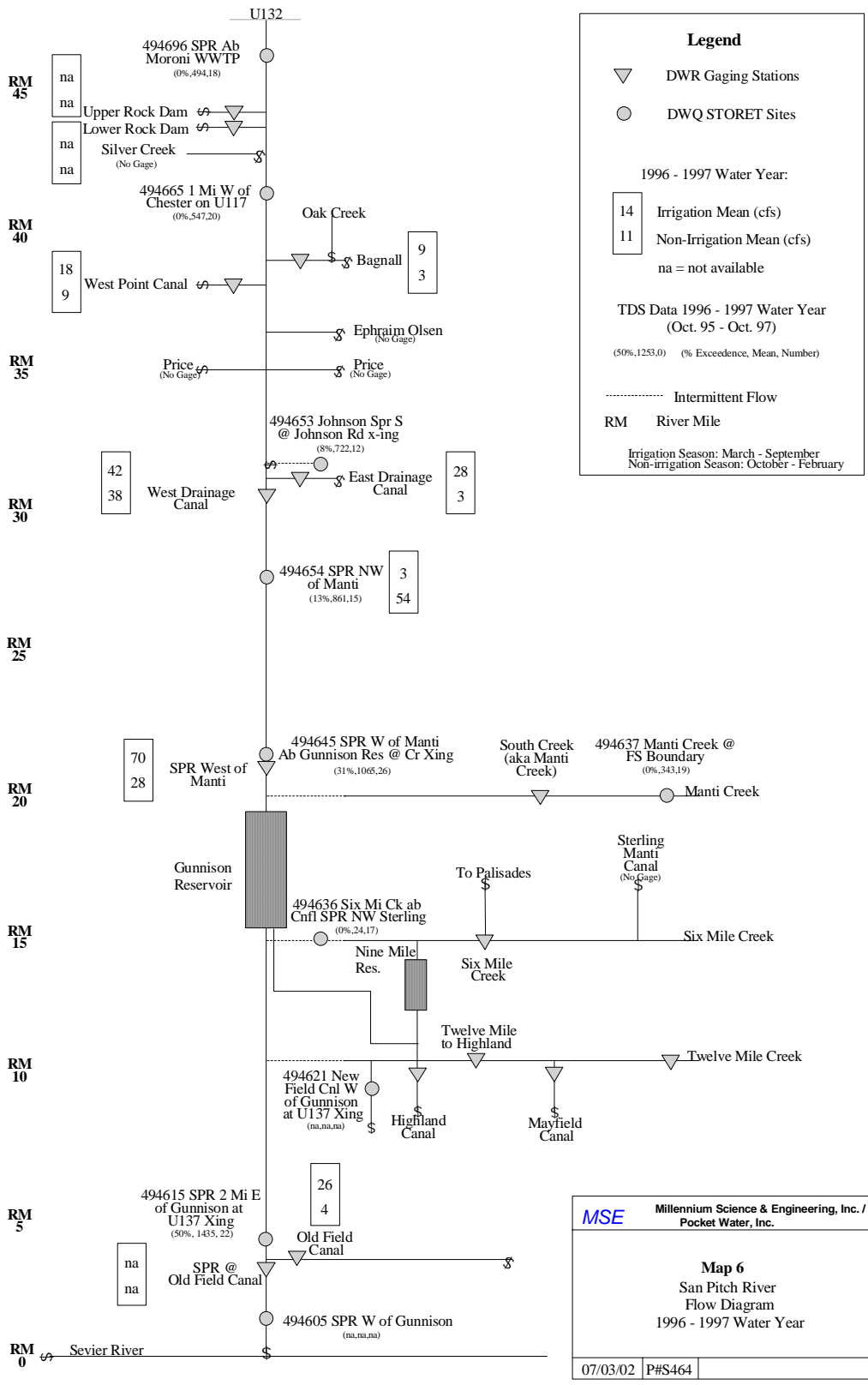
Map 4
Land Ownership
San Pitch River Watershed

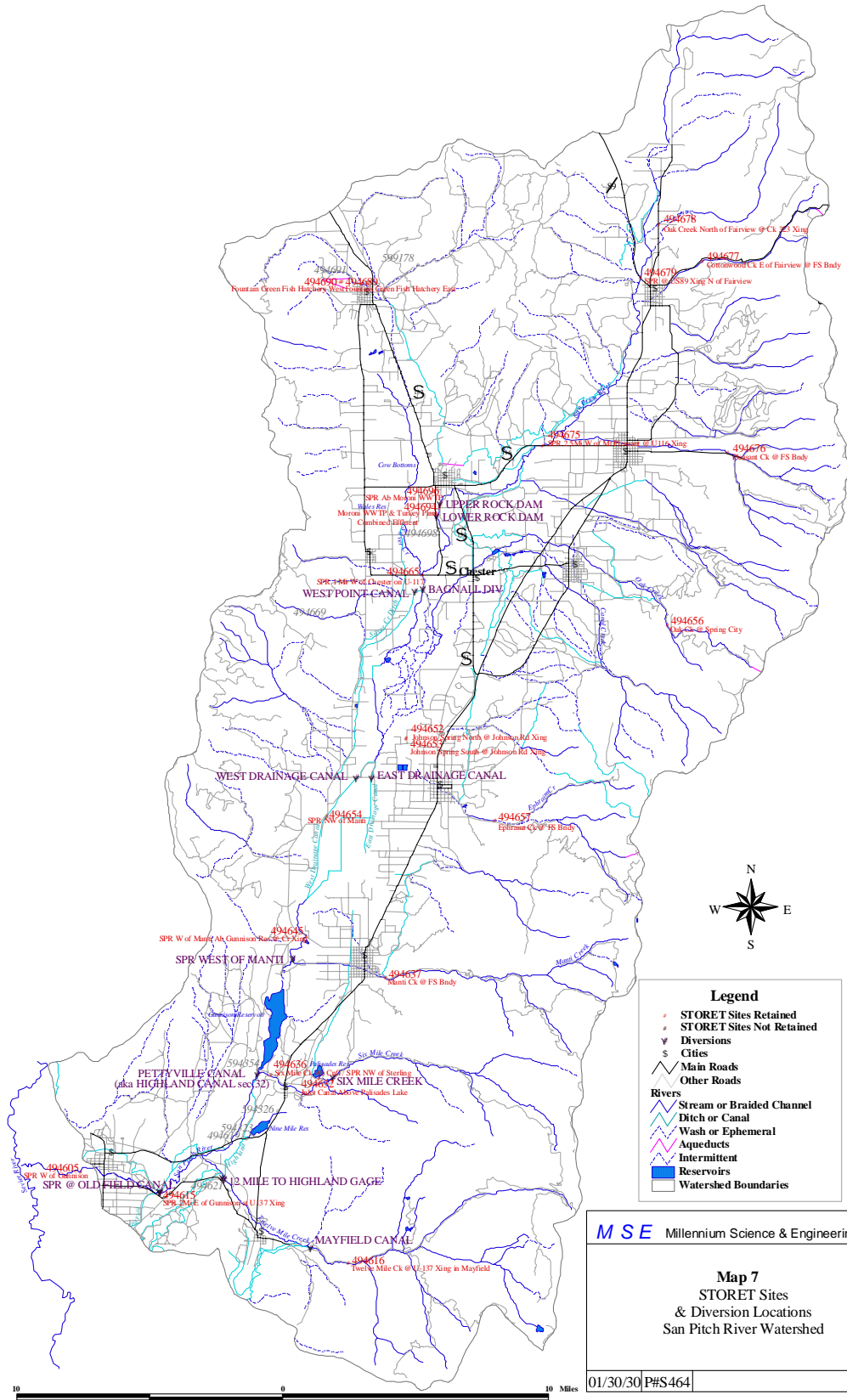
01/30/03 P#S464



MSE Millennium Science & Engineering, Inc.

01/30/03 P#S464





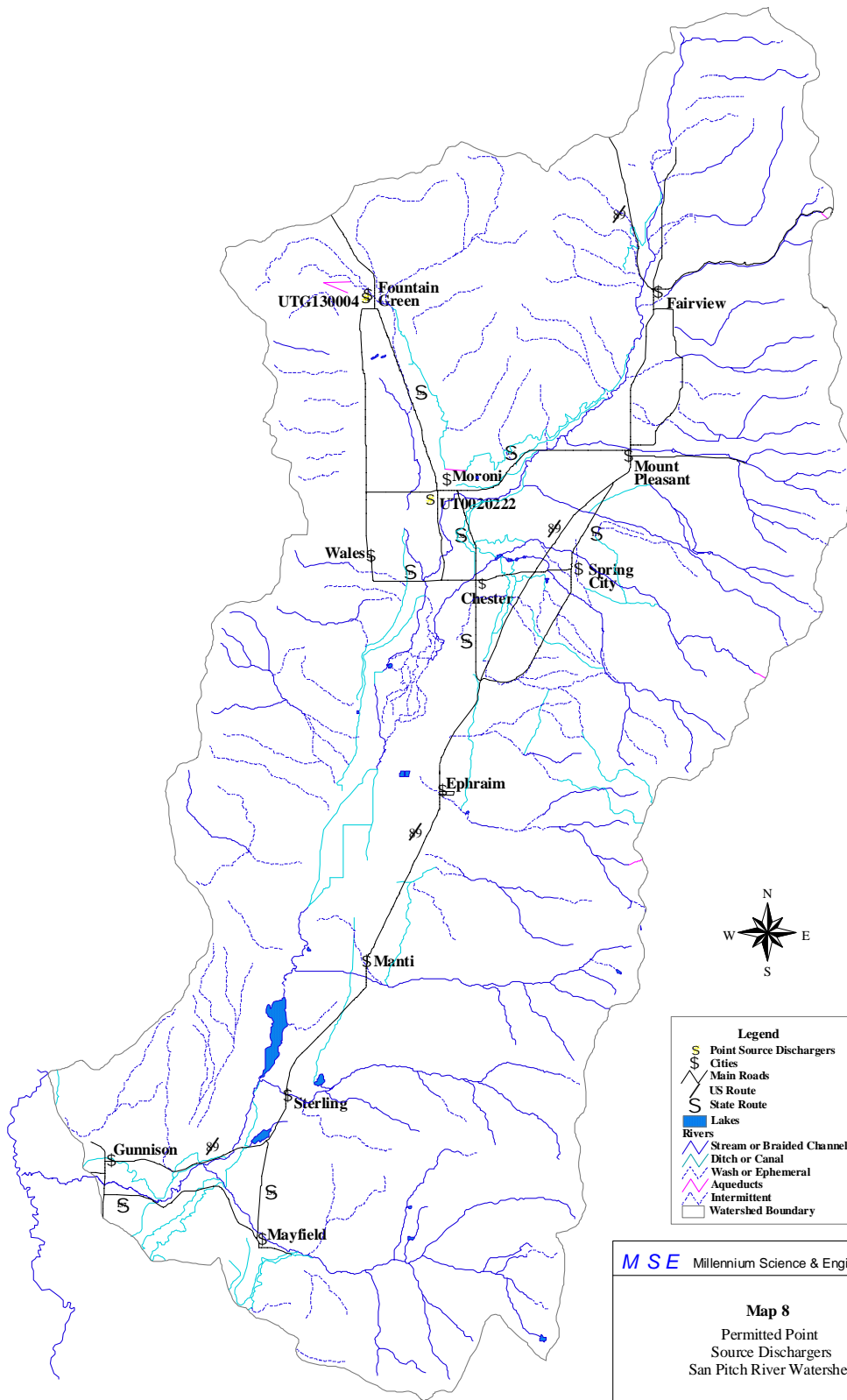
Legend

- STORET Sites Retained
- STORET Sites Not Retained
- Y Diversions
- S Cities
- Main Roads
- Other Roads
- Rivers**
- Stream or Braided Channel
- Ditch or Canal
- Wash or Ephemeral
- Aqueducts
- Intermittent
- Reservoirs
- Watershed Boundaries

MSE Millennium Science & Engineering, Inc.

Map 7
STORET Sites
& Diversion Locations
San Pitch River Watershed

01/30/30 P#S464



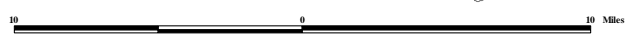
Legend

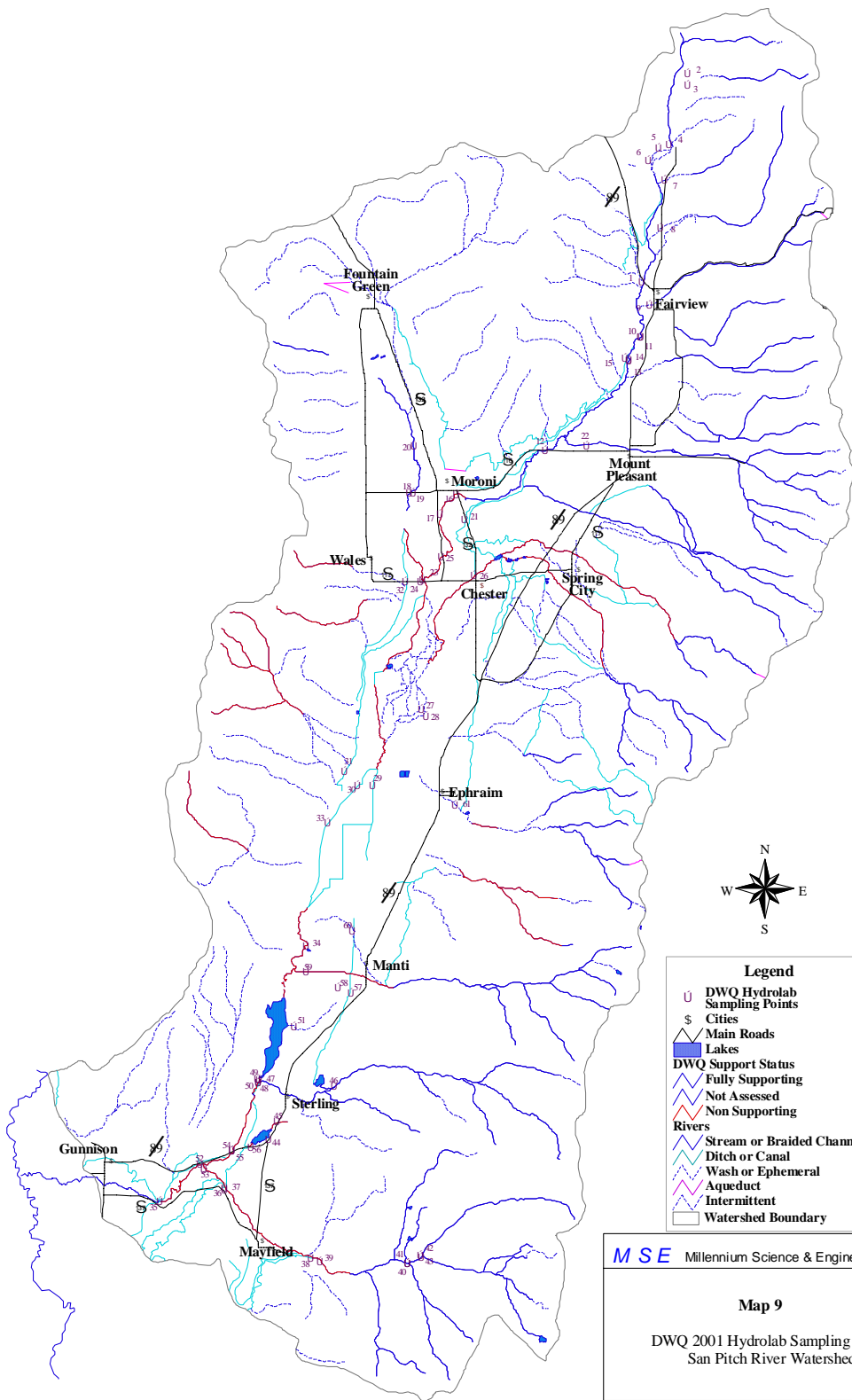
- S Point Source Dischargers
- § Cities
- Main Roads
- US Route
- State Route
- Lakes
- Rivers**
- Stream or Braided Channel
- Ditch or Canal
- Wash or Ephemeral
- Aqueducts
- Intermittent
- Watershed Boundary

MSE Millennium Science & Engineering, Inc.

Map 8
Permitted Point
Source Dischargers
San Pitch River Watershed

01/30/03 P#S464





Legend

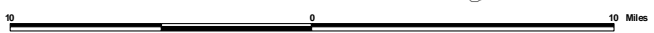
- U DWQ Hydrolab Sampling Points
- S Cities
- Main Roads
- Lakes
- DWQ Support Status
 - Fully Supporting
 - Not Assessed
 - Non Supporting
- Rivers
 - Stream or Braided Channel
 - Ditch or Canal
 - Wash or Ephemeral
 - Aqueduct
 - Intermittent
- Watershed Boundary

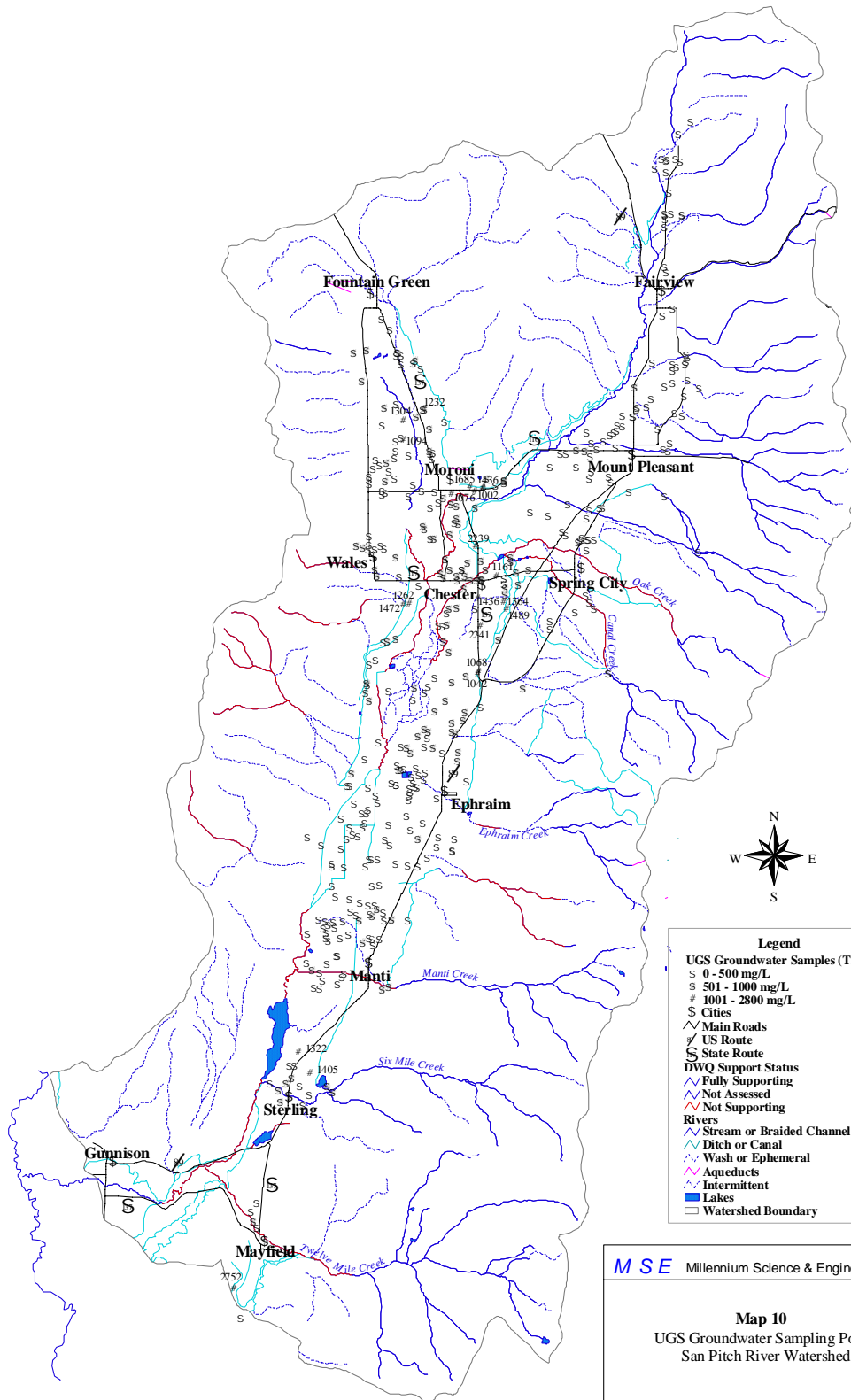
MSE Millennium Science & Engineering, Inc.

Map 9

DWQ 2001 Hydrolab Sampling Points
San Pitch River Watershed

01/30/03 P#S464





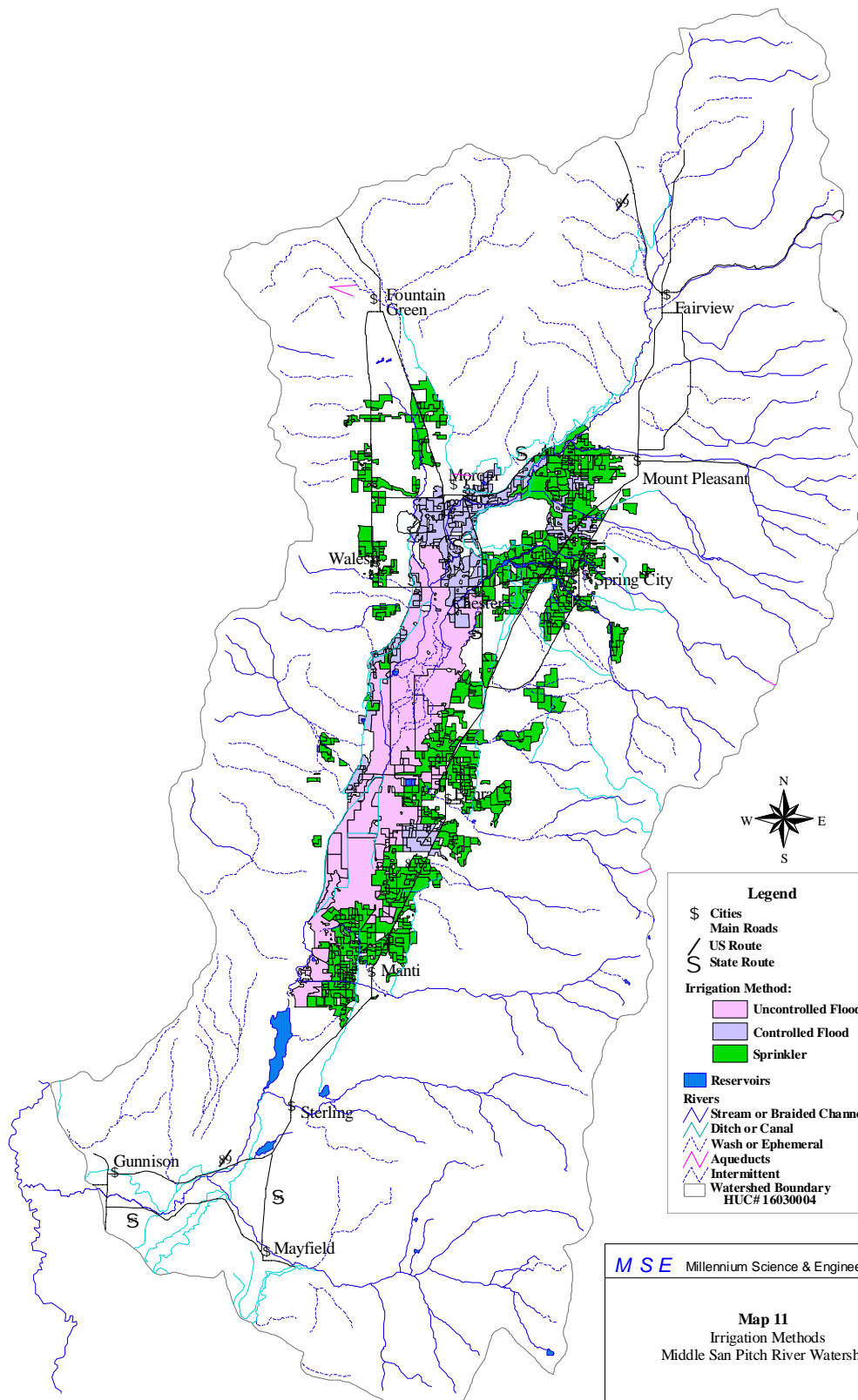
Legend

- UGS Groundwater Samples (TDS)
- S 0 - 500 mg/L
- s 501 - 1000 mg/L
- # 1001 - 2800 mg/L
- \$ Cities
- ^ Main Roads
- / US Route
- S State Route
- DWQ Support Status
- ✓ Fully Supporting
- ∨ Not Assessed
- ∧ Not Supporting
- Rivers
- Stream or Braided Channel
- Ditch or Canal
- Wash or Ephemeral
- Aqueducts
- Intermittent
- Lakes
- Watershed Boundary

MSE Millennium Science & Engineering, Inc.

Map 10
UGS Groundwater Sampling Points
San Pitch River Watershed

01/30/03 | P#S464



Legend

- \$ Cities
- Main Roads
- / US Route
- S State Route

Irrigation Method:

- Uncontrolled Flood
- Controlled Flood
- Sprinkler

Reservoirs

Rivers

- Stream or Braided Channel
- Ditch or Canal
- Wash or Ephemeral
- Aqueducts
- Intermittent
- Watershed Boundary

HUC# 16030004

MSE Millennium Science & Engineering, Inc.

Map 11
Irrigation Methods
Middle San Pitch River Watershed